

Injury attendances to Rochdale Infirmary Emergency Department

October 2010 to September 2011

This report summarises recorded injury attendances to Rochdale Infirmary Emergency Department (ED) between October 2010 and September 2011.

Between October 2010 and September 2011, there were 23,566 injury attendances to Rochdale Infirmary ED. Males accounted for over half (54%) of all attendances. The month with the highest attendances was March (n=2,412) with September (n=1,566) having the lowest attendances (**Figure 1**). The majority (63%) of attendances were recorded as other injury; of the specified injury groups falls accounted for the highest proportion (20%) followed by road traffic collision (RTC) (7%) and assault (4%) (**Table 1**).

For all attendances the highest proportion were for persons aged 5 to 19 (28%) and 20 to 34 (23%) years (**Figure 2**). Over a quarter (28%) of fall attendees were aged 65 or over. Over two-fifths (42%) of RTC attendees were aged 20 to 34 (**Figure 3**).

Table 2 shows the location where injuries occurred. Over two-fifths (42%) of injuries occurred in the home; 14% of injuries occurred in a public place. Almost two-fifths (38%) of falls occurred in the home whilst two-thirds (66%) of deliberate self harm (DSH) injuries occurred in the home.

Table 3 shows the ethnicity of attendees to Rochdale Infirmary ED. Three-quarters (75%) were white and 17% were Pakistani.

The disposal of a patient can give an indication of the severity of the injuries sustained. Nearly two-thirds (65%) of attendees were discharged, whilst three in ten (30%) were referred and 5% were admitted (**Table 4**). Nearly four in five (79%) of RTC attendees were discharged (**Table 5**).

Table 6 shows the arrival methods of attendances at Rochdale Infirmary ED. Over seven in ten (72%) arrived by private transport whilst 8% arrived by taxi and 5% by ambulance.

Table 7 presents data on assault attendances at Rochdale Infirmary ED. Over seven in ten (72%) were male; nearly half (46%) occurred in a public place; four in ten (40%) were aged 20 to 34 years; while just over a tenth (11%) presented at the ED on weekend nights.

Figure 1: Rochdale Infirmary ED: Total injury attendances by gender and month, October 2010 to September 2011

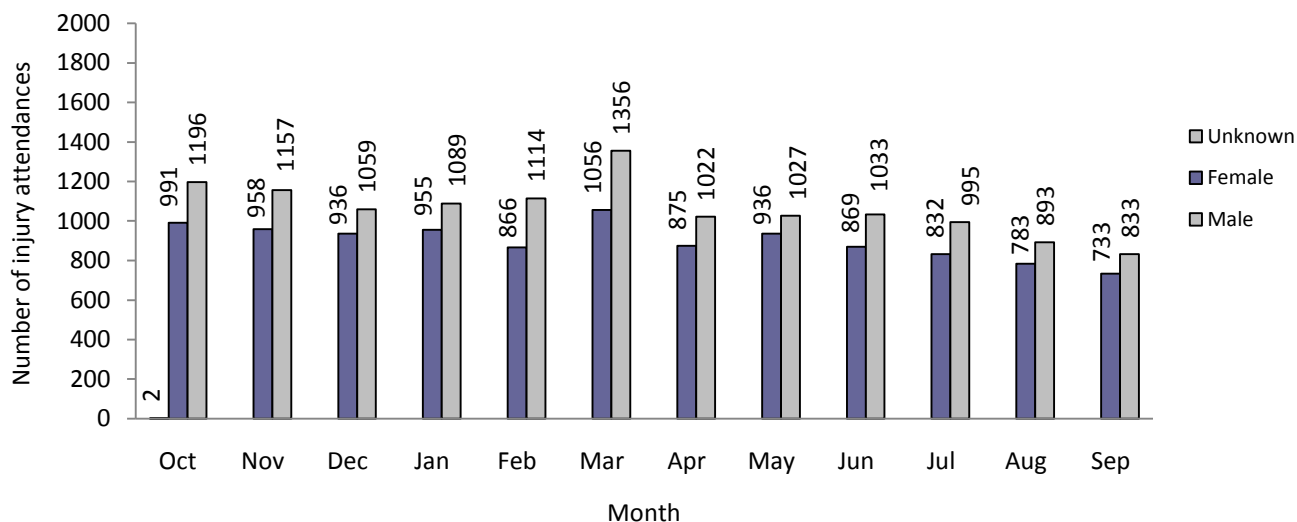
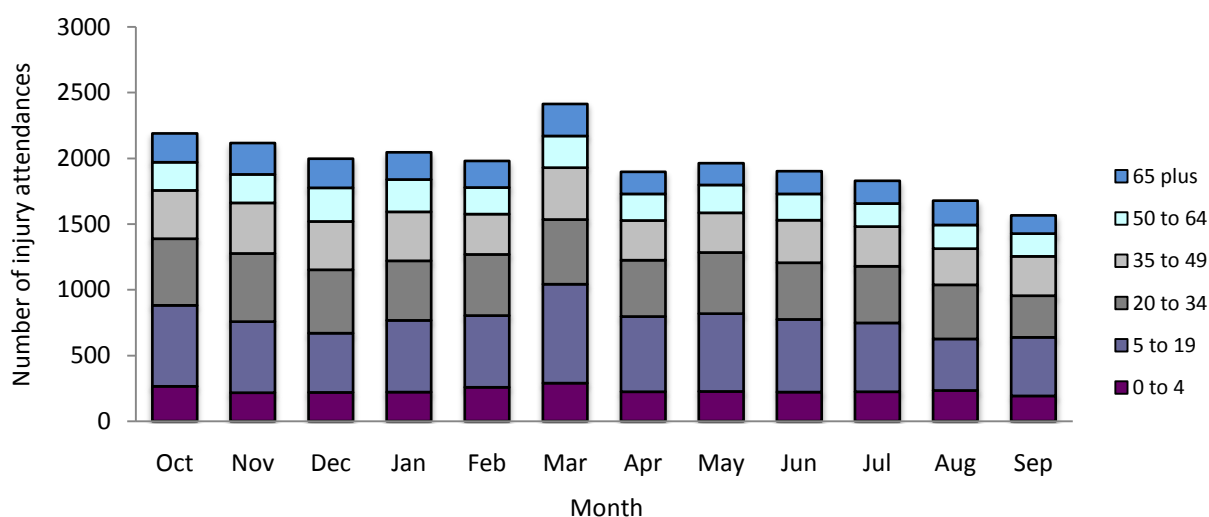


Table 1: Rochdale Infirmary ED: Total injury attendances by injury group and month, October 2010 to September 2011¹²

Injury group	Oct	Nov	Dec	Jan	Feb	Mar	Apr	May	Jun	Jul	Aug	Sep	Total	%
Other injury	1338	1186	1126	1240	1269	1580	1202	1335	1257	1254	1023	984	14794	63
Fall	456	481	557	475	397	507	370	306	332	273	307	280	4741	20
RTC	195	256	151	139	161	126	129	117	125	111	128	117	1755	7
Assault	81	84	60	98	60	85	70	78	57	51	43	62	829	4
Burns & scalds	50	70	72	63	53	55	62	55	53	67	74	63	737	3
Bites & stings	56	***	***	24	31	47	57	62	71	***	94	***	625	3
DSH	13	***	***	5	9	12	7	10	7	***	7	***	85	0
Total	2189	2115	1995	2044	1980	2412	1897	1963	1902	1827	1676	1566	23566	100

Figure 2: Rochdale Infirmary ED: Total injury attendances by age group and month, October 2010 to September 2011



¹ Due to low numbers sports injury (n=<5) and electrical accident (n=12) were included in other injury.

² Please note that all numbers less than five have been suppressed in line with patient confidentiality and if there is only one number <5 in a category then two numbers will be suppressed at the next level.

Figure 3: Rochdale Infirmary ED: Total injury attendances by age group and injury group (excluding other injury), October 2010 to September 2011

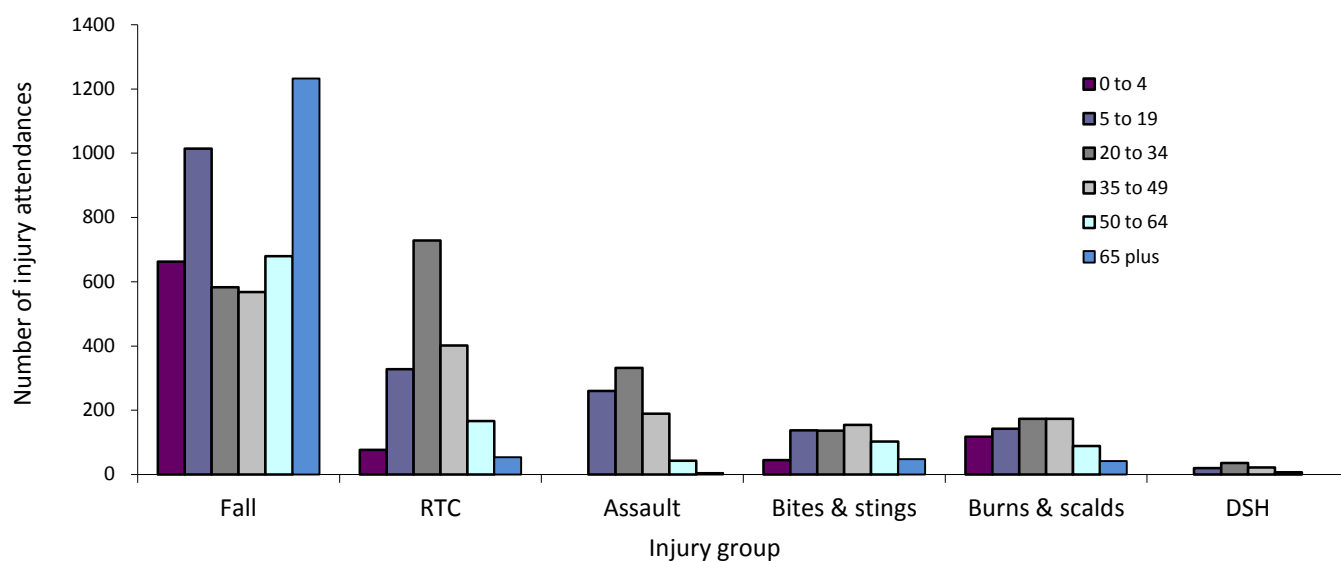


Table 2: Rochdale Infirmary ED: Total injury attendances by location of incident and injury group (excluding other injury), October 2010 to September 2011

Location	Assault		Bites & stings		Burns & scalds		DSH		Fall		RTC		Total	
	n	%	n	%	n	%	n	%	n	%	n	%	n	%
Unknown	71	9	44	7	216	29	10	12	511	11	40	2	892	8
Educational establishment	38	5	***	1	9	1	***	***	345	7	***	***	400	6
Home	118	14	274	44	345	47	56	66	1824	38	27	2	2644	42
Other	177	21	140	22	79	11	15	18	673	14	1669	95	2753	25
Public place	384	46	138	22	22	3	***	***	1248	26	***	***	1807	14
Work	41	5	***	4	66	9	***	***	140	3	***	***	276	6
Total	829	100	625	100	737	100	85	100	4741	100	1755	100	8772	100

*Percentages may not add to 100 due to rounding.

Table 3: Rochdale Infirmary ED: Total injury attendances by ethnicity and month, October 2010 to September 2011³

Ethnicity	Oct	Nov	Dec	Jan	Feb	Mar	Apr	May	Jun	Jul	Aug	Sep	Total	%
White	1641	1614	1459	1512	1464	1835	1420	1490	1365	1332	1290	1145	17567	75
Pakistani	357	324	378	368	352	382	335	317	361	324	275	298	4071	17
Not stated	78	59	50	54	47	59	40	43	46	62	32	43	613	3
Bangladeshi	41	41	27	37	37	40	45	30	41	37	25	19	420	2
Black	31	17	20	20	29	23	16	26	21	21	20	16	260	1
Mixed	12	19	24	16	17	29	16	23	19	21	16	16	228	1
Any other ethnic group	14	19	17	18	16	27	11	12	18	8	6	14	180	1
Other Asian background	10	15	12	***	***	***	9	***	7	11	***	***	106	0
Indian	***	***	8	11	8	8	5	11	18	8	5	9	101	0
Chinese	***	***	0	***	***	***	***	***	6	***	***	***	20	0
Total	2189	2115	1995	2044	1980	2412	1897	1963	1902	1827	1676	1566	23566	100

*Percentages may not add to 100 due to rounding.

³ White = Irish, British, other white background; Mixed = white and black, white and Asian, mixed any other; Other = any other ethnic group, any other Asian background; Black = African, Caribbean, other black.

Table 4: Rochdale Infirmary ED: Total injury attendances by method of disposal and month, October 2010 to September 2011⁴

Disposal	Oct	Nov	Dec	Jan	Feb	Mar	Apr	May	Jun	Jul	Aug	Sep	Total	%
Discharged	1406	1324	1270	1304	1287	1598	1287	1269	1248	1134	1038	1039	15204	65
Referral/follow-up	633	645	581	613	559	650	524	595	587	629	567	463	7046	30
Admitted	137	123	120	111	122	139	63	79	56	52	63	58	1123	5
Other	13	23	24	16	12	25	23	20	11	12	8	6	193	1
Total	2189	2115	1995	2044	1980	2412	1897	1963	1902	1827	1676	1566	23566	100

*Percentages may not add to 100 due to rounding.

Table 5: Rochdale Infirmary ED: Total injury attendances by method of disposal and injury group, October 2010 to September 2011

Disposal	Assault		Bites & stings		Burns & scalds		DSH		Fall		Other injury		RTC		Total	
	n	%	n	%	n	%	n	%	n	%	n	%	n	%	n	%
Discharged	521	63	460	74	262	36	27	32	2652	56	9901	67	1381	79	15204	65
Referral/follow-up	178	21	159	25	445	60	28	33	1489	31	4428	30	319	18	7046	30
Admitted	67	8	***	***	***	***	20	24	531	11	446	3	30	2	1123	5
Other	63	8	***	***	***	***	10	12	69	1	19	0	25	1	193	1
Total	829	100	625	100	737	100	85	100	4741	100	14794	100	1755	100	23566	100

*Percentages may not add to 100 due to rounding.

Table 6: Rochdale Infirmary ED: Total injury attendances by mode of arrival and month, October 2010 to September 2011

Arrival mode	Oct	Nov	Dec	Jan	Feb	Mar	Apr	May	Jun	Jul	Aug	Sep	Total	%
Private transport	1556	1494	1398	1442	1344	1707	1391	1451	1439	1329	1221	1152	16924	72
Taxi	191	161	173	165	192	180	166	157	141	143	126	120	1915	8
Ambulance	168	179	163	144	123	189	77	43	42	53	43	43	1267	5
Not recorded	74	89	87	111	94	84	81	124	125	120	114	97	1200	5
Foot	95	81	70	89	87	115	95	103	102	109	115	104	1165	5
Public transport	44	43	29	36	33	40	36	41	26	40	29	26	423	2
Work transport	22	28	20	17	35	42	16	16	8	13	8	11	236	1
Unknown	20	20	27	15	43	34	18	9	9	9	***	***	217	1
Other	14	13	16	13	13	13	8	7	***	***	***	***	116	0
Police	5	7	12	12	16	8	9	12	***	***	***	8	103	0
Total	2189	2115	1995	2044	1980	2412	1897	1963	1902	1827	1676	1566	23566	100

*Percentages may not add to 100 due to rounding.

⁴ Admitted=admitted to ED bed/became a lodged patient of the same health care provider; Discharged=discharged - did not require any follow up treatment; Referral/follow-up =discharged - follow up treatment to be provided by GP, referred to ED clinic, referred to fracture clinic, referred to other out-patient clinic, referred to other health care professional; Other=died in department, left department before being treated, left department having refused treatment, other.

Table 7: Rochdale Infirmary ED: Assault attendances by gender, incident location, age group and day/time of attendance, October 2010 to September 2011*

Sex	Assaults (n=829)		All injuries (n=23,566)
	n	%	%
Female	236	28	46
Male	593	72	54
Location			
Public place	384	46	14
Home	118	14	42
Other	177	21	25
Work	41	5	6
Educational establishment	38	5	6
Not recorded	71	9	8
Age group			
0 - 4	***	***	12
5 - 19	260	31	28
20 - 34	332	40	23
35 - 49	189	23	17
50 - 64	43	5	11
65 plus	***	***	10
Day & time			
Weekend nights**	92	11	11
Weekend days	173	21	21
Weekdays	564	68	69

*Percentages may not add to 100 due to rounding.

**8pm to 3.59am, Friday evening/Saturday morning, Saturday evening/Sunday morning, Sunday evening/Monday morning.

Author: Ian Warren, Published: December 2011

For further information please contact: Centre for Public Health, Research Directorate, Liverpool John Moores University,
2nd Floor, Henry Cotton Building, 15-21 Webster Street, Liverpool, L3 2ET.

Tel: 0151 231 4513 or Email: i.j.warren@ljmu.ac.uk

Website: www.tiig.info (data requests should be made through the website)